

68 Tungstone Way, Market Harborough, LE16 9GG



Offers Over £300,000

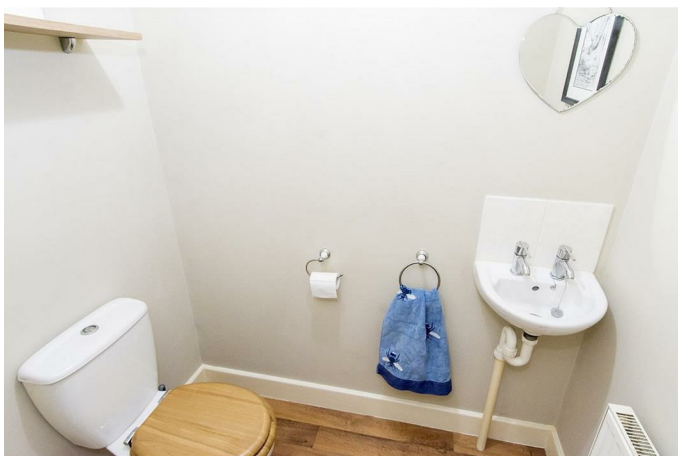
Welcome to Tungstone Way, Market Harborough - a sizeable townhouse that offers over 1,350 Sq Ft, offering plenty of room to move around and make it your own. Situated close to amenities, you'll have everything you need right on your doorstep. Whether it's a quick trip to the shops, dropping the children off at school or a leisurely stroll, this property offers the best of both convenience and comfort. This delightful property offers versatility with either two reception rooms, ideal for entertaining guests or three/four bedrooms providing ample space for the whole family to enjoy. The main bedroom even comes complete with an en-suite! One of the standout features of this townhouse is the west-facing garden, perfect for soaking up the afternoon sun or enjoying a summer BBQ with friends. Parking will never be an issue with space for multiple vehicles and a garage making coming home a breeze! The property is being offered to market with NO UPWARD CHAIN!

Entrance Hall



Accessed via the covered porch through the double glazed front door. Doors off to: Rooms. Stairs rising to: First floor. Understairs storage cupboard. Wooden flooring. Radiator.

WC 5'6 x 3'3 (1.68m x 0.99m)



Comprising: Low level WC and wash hand basin. Extractor. Wooden flooring. Radiator.

Bedroom Four/Second Reception Room 12'7 x 9'3 (3.84m x 2.82m)



UPVC double glazed door with full length double glazed side panels to rear aspect. TV point. Radiator.

Utility Room 8'7 x 6'4 (2.62m x 1.93m)



Having a selection of fitted base units with a laminate worktop over and a 1 1/2 bowl stainless steel sink with drainer. There is space and plumbing for a freestanding washing machine and a further space for a freestanding condensing tumble dryer. Double glazed door out to: Rear garden. Wooden flooring. Boiler. Extractor. Radiator.

First Floor Landing

Doors off to: Lounge and kitchen. Stairs rising to: First floor. Radiator.

Lounge/Diner 15'10 x 15'4 (4.83m x 4.67m)



Two UPVC double glazed windows to the rear aspect. LVT flooring. TV and telephone point. 2 x Radiators.

(Lounge / Diner Photo Two)



Dining Area



Kitchen/Breakfast Room 15'4 x 9'4 (4.67m x 2.84m)



Having a selection of fitted base and wall units with a laminate worktop over and a 1 1/2 bowl sink with drainer. There is a single fan assisted electric oven, electric hob, extractor, space and plumbing for a freestanding dishwasher and space for a freestanding fridge/freezer. There are two UPVC double glazed windows to the front aspect, vinyl flooring, tiled splash back, TV point and radiator.

(Kitchen / Breakfast Room Photo Two)



(Kitchen / Breakfast Room Photo Three)



Second Floor Landing

Doors off to: Bedrooms and bathroom. Loft hatch access. Airing cupboard. Radiator.

Bedroom One 10'11 x 10'9 (3.33m x 3.28m)

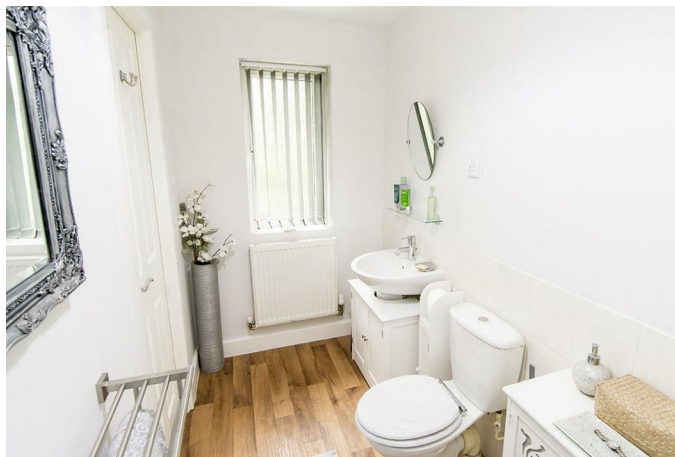


UPVC double glazed window to rear aspect. TV point. Radiator. Door through to: En-Suite.

(Bedroom One Photo Two)



En-Suite 10'9 x 4'7 (3.28m x 1.40m)



Comprising: Double shower enclosure with wall tiling, low level WC and wash hand basin. UPVC double glazed window to rear aspect. Vinyl flooring. Shaver socket. Radiator.

(En-Suite Photo Two)



Bedroom Two 12'5 x 8'5 (3.78m x 2.57m)



UPVC double glazed window to front aspect. Radiator.

(Bedroom Two Photo Two)



Bedroom Three 8'11 x 7'2 (2.72m x 2.18m)



UPVC double glazed window to front aspect. Radiator.

Bathroom 8'5 x 6'2 (2.57m x 1.88m)



Comprising: Panelled bath with mixer tap, separate shower enclosure with wall tiling, low level W/C and wash hand basin. Extractor. Shaver socket. Vinyl flooring. Radiator.

Outside

The property is neatly positioned back from the road providing off road parking for multiple vehicles. There is access to the garage from the driveway, with the garage having an up and over door, power and light. There is also a handy internal door into the: Entrance hall. To the rear is a good sized and extremely private West facing landscaped garden. There is a paved patio area, a decorative gravel seating area, raised sleeper borders planted with a variety of established planting, an ornamental pond and steps up to a further garden area where there is a shed.



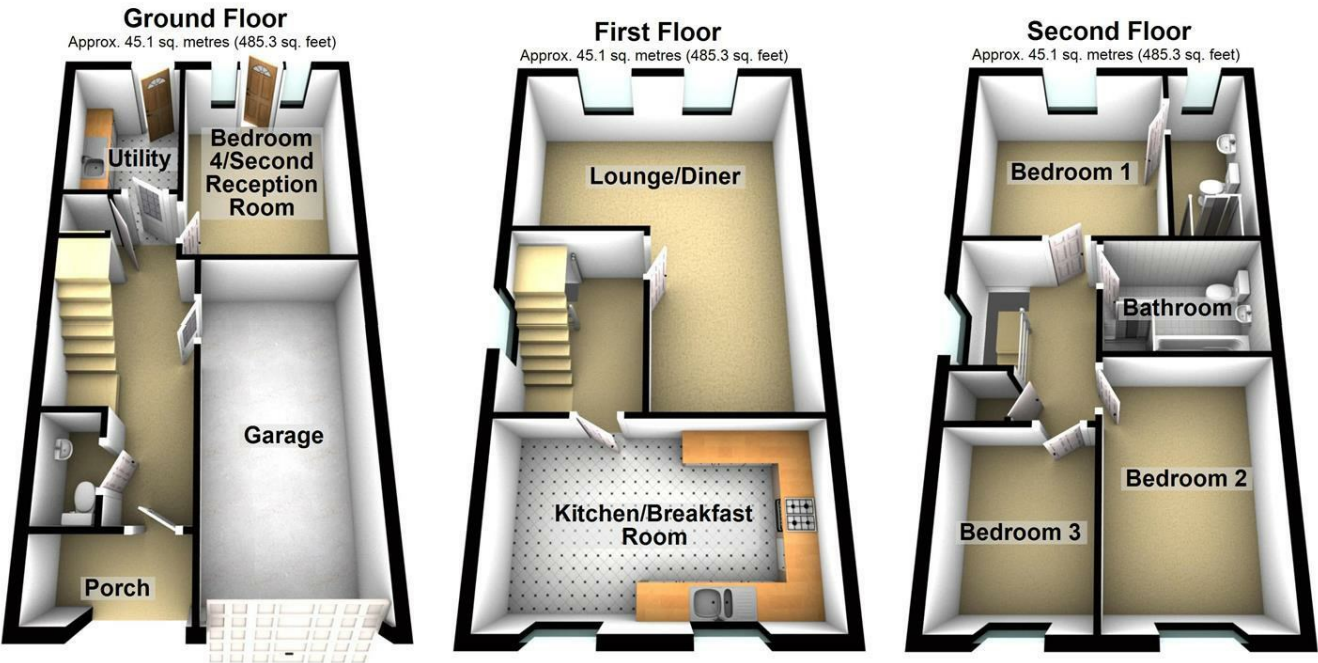
(Rear Garden Photo Two)



(Rear Garden Photo Three)



Floor Plan

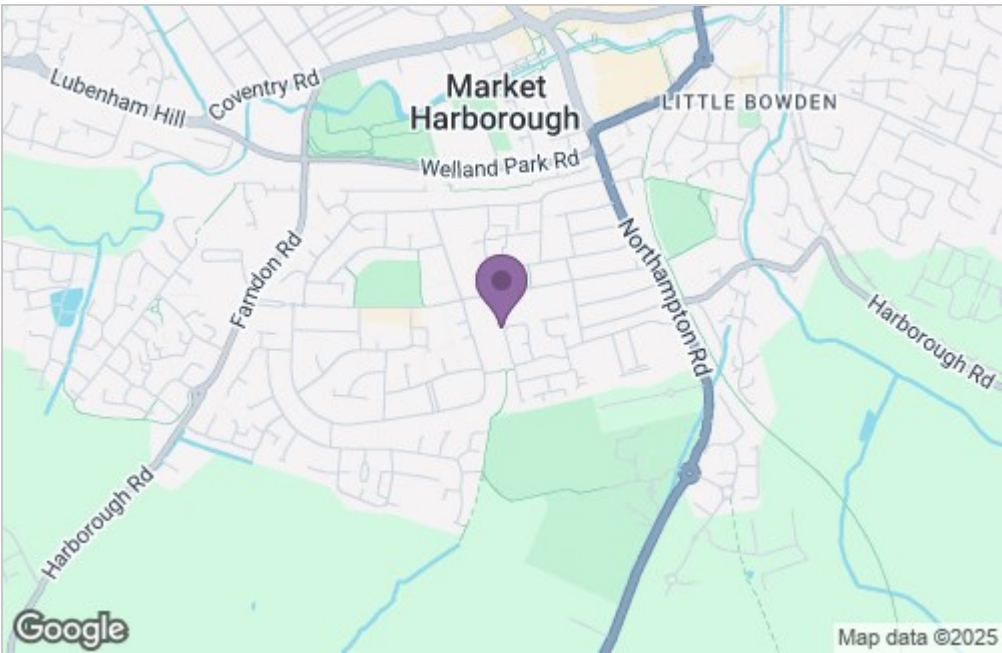


Total area: approx. 135.2 sq. metres (1455.8 sq. feet)

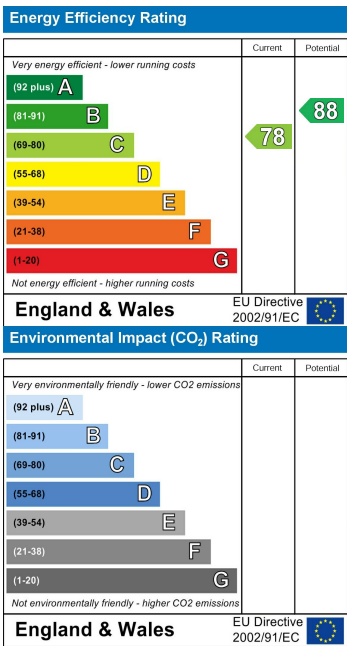
THIS FLOOR PLAN WAS PRODUCED BY ADAMS AND JONES ESTATE AGENTS AND REMAINS PROPERTY OF THEM INDEFINITELY. ADAMS AND JONES RESERVE THE RIGHT TO CHARGE A FEE TO ANY OTHER AGENT OR VENDOR ATTEMPTING TO USE THESE PLANS FOR MARKETING PURPOSES WITHOUT PRIOR WRITTEN PERMISSION.

Plan produced using PlanUp.

Area Map



Energy Efficiency Graph



Service without compromise